

MONTHLY MEMBERSHIP PROGRESS REPORT

District 21 S

Results as of: 5/31/2026

GMT:

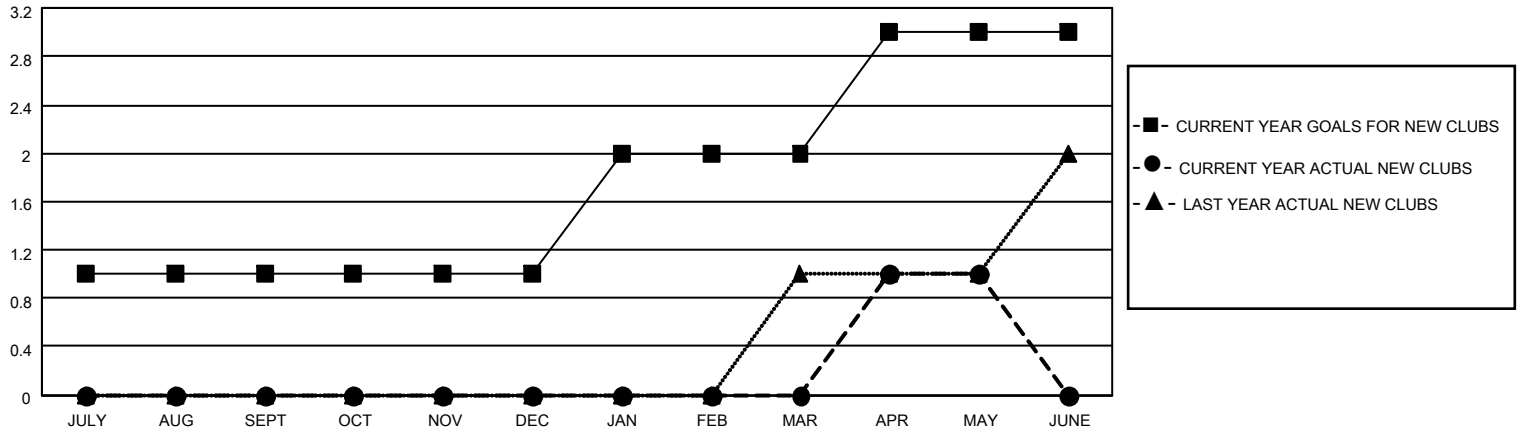
LOCATION ARIZONA

GMT CA

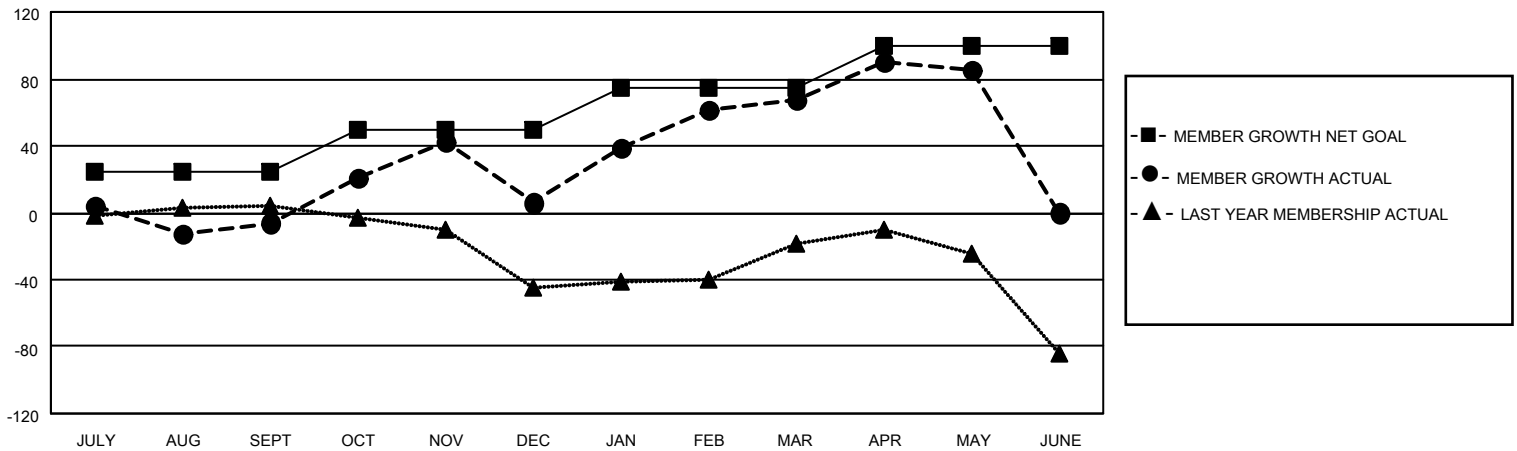
Clubs			
RESULTS FOR 2025-2026			
QUARTER	NEW CLUB GOAL	NEW CLUBS	DROPPED CLUBS
JULY/AUG/SEPT	1	0	1
OCT/NOV/DEC	0	0	0
JAN/FEB/MAR	1	0	0
APR/MAY/JUNE	1	1	0

Members			
RESULTS FOR 2025-2026			
QUARTER	MEMBER GROWTH NET GOAL	MEMBER GROWTH ACTUAL	DROPPED MEMBERS ACTUAL (including transfers)
JULY/AUG/SEPT	25	60	46
OCT/NOV/DEC	25	83	65
JAN/FEB/MAR	25	98	28
APR/MAY/JUNE	25	69	45

GOALS AND ACTUAL NEW CLUBS CUMULATIVE



GOALS AND ACTUAL MEMBERS CUMULATIVE



DROPPED CLUBS: 1	31 CLUBS OF 44 ADDED 1 OR MORE NEW MEMBERS	<u>GENDER DISTRIBUTION</u>	
		MALE	560 (49.04%)
		FEMALE	581 (50.88%)
<u>DROPPED MEMBERS</u>		TOTAL FAMILY UNIT MEMBERS 218	
DECEASED	21	FAMILY MEMBERS PAYING HALF DUES 110	
CLUB CANCELLED	0		
OTHER	163		
TOTAL	184		

[CLICK HERE FOR CUMULATIVE MEMBERSHIP DATA](#)